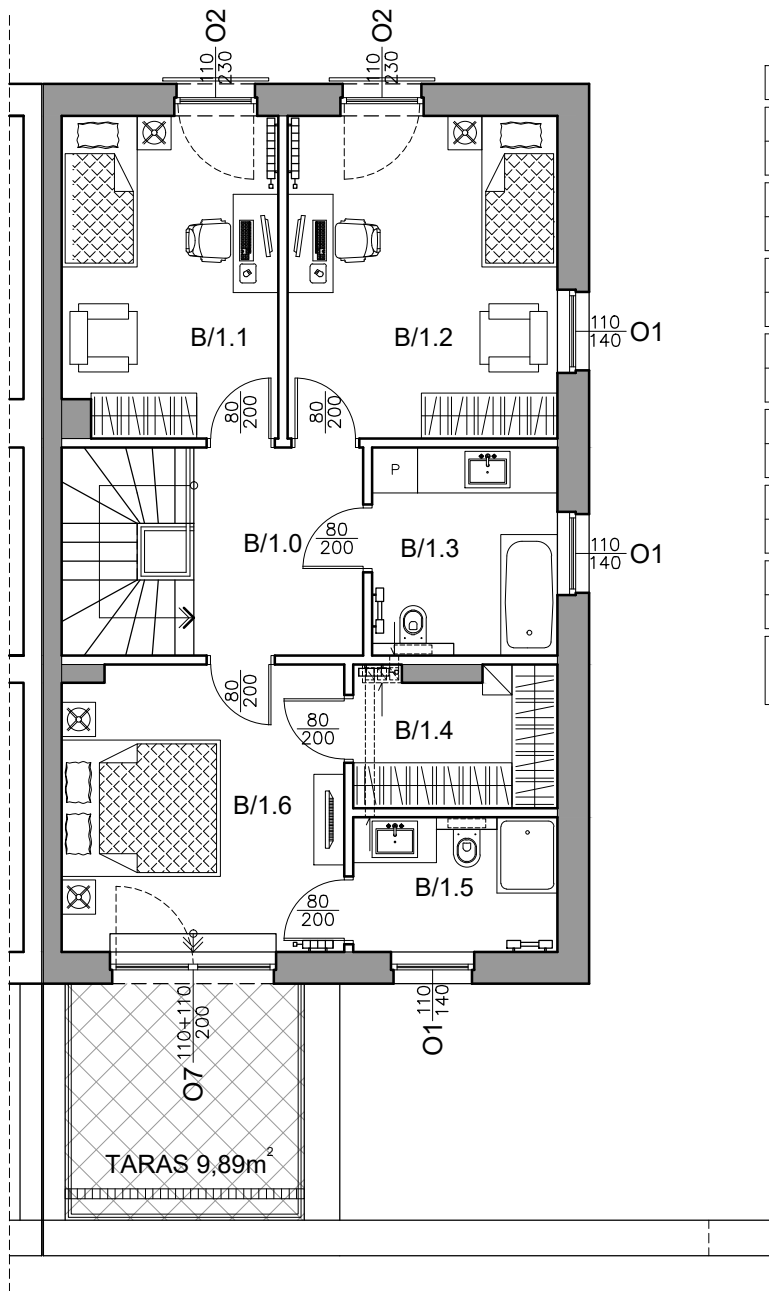


# GRODZIŃSKA

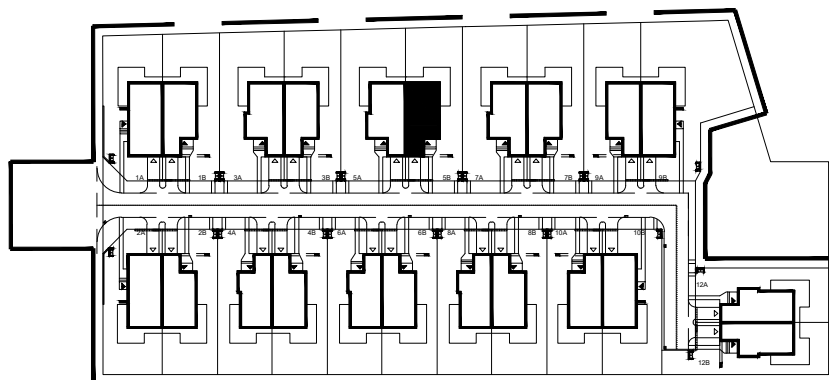
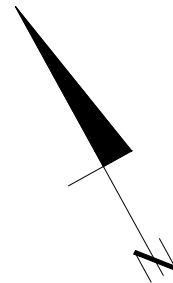
residence

SEGMENT DOMU 5B

PIĘTRO



SEGMENT DOMU 5B	
B/1.0	Komunikacja
8,13m <sup>2</sup>	gres
B/1.1	Pokój
11,84m <sup>2</sup>	parkiet
B/1.2	Pokój
15,01m <sup>2</sup>	parkiet
B/1.3	Łazienka
6,58m <sup>2</sup>	terakota
B/1.4	Garderoba
4,73m <sup>2</sup>	terakota
B/1.5	Łazienka
4,67m <sup>2</sup>	terakota
B/1.6	Pokój
13,85m <sup>2</sup>	parkiet
Powierzchnia użytkowa piętra:	
64,81m <sup>2</sup>	



0 1 2 3m